

Chimneyville Weavers and Spinners Guild

April 2023

Inside this Issue

PG. 1

- ❖ Message from the President

PG. 2

- ❖ CWSG Program Schedule
- ❖ Meet the Members Spotlight
- ❖ New Members Drive

PG. 3

- ❖ CWSG Officer Nomination Slate
- ❖ Upcoming Community Events

PG. 4-5

- ❖ Sheep to Shawl is Always Fun!
- ❖ Sheep to Shawl Thank Yous
- ❖ HGA Textiles and Tea Schedule
- ❖ Advertisement: Looms for Sale

PG. 6

- ❖ Free (and without ads!) Drawdown Software for Windows
- ❖ Member Show and Tell
- ❖ CWSG Organization Information

Logo image adapted from image graciously provided by Marcy Petrini at <https://www.marcypetrini.com/>

Message from the President

From Nancy Hester, President

Welcome to April!

The April 1 Sheep to Shawl event was a tremendous success. I want to express my gratitude to everyone involved: our members, the Sheep to Shawl Committee, the Ag Center, and those purchasing items from our sale. On Saturday, CWSG distributed 15 membership application forms and two ladies joined our guild.

The 2023 annual meeting will be held on Saturday, April 15th, and I want to encourage you all to attend this important meeting. It will be held at the Madison City Library at 10:00 am. We will have refreshments, as well as a program on little looms after the meeting.

The severe storms over the past several weeks have caused much damage, and I hope you are all staying safe. Wishing you all continuing health and happiness throughout the spring season.



One of the sheep who so graciously "volunteered" to get a haircut at Sheep to Shawl. Photo courtesy of Terry Dwyer.

CWSG Program Schedule

Small Looms for Weaving: April 15th, 10:00am at the Madison City Library

presented by Nancy Hester and Janet Lee

Small looms are economical, take up limited space, and lend themselves to quick and fun projects. During this program, we will explore inkle looms, rigid heddle looms, tapestry/frame looms, and other small looms.

Meet the Members: Spotlight on Sarah Pair

Born/Raised: I was born/raised in the western part of Arkansas at Fort Smith. I have lived near Jackson since September of 2020.

Work: I am the Director of Collections at the MS Agriculture and Forestry Museum. Along with taking care of the collection, I also help with programming, specifically the fiber art related programming, as needed.

How I became interested in CWSG; How long I've been a member: I first heard about the CWSG in the spring of 2021 when I was doing a spinning demo for Spring Farm Days and put it in the back of my mind as something to look into. So when I came across the booth at the last Vicksburg Fiber fest I was able to get information about the guild and when meetings were and was able to join in November after the fall event season was over.



How I became interested in weaving/spinning/fiber art: I've always been interested in the fiber arts. I got my first little tapestry loom at 10 or 12 when the American Girl Josephina debuted, and then in high school took up crocheting. Which led to me going "people in the past used to make their own yarn. How hard can it be?" Famous. Last. Words. I tracked down my first drop spindle in 2011 or 2012 and was immediately hooked. I've now got a rigid heddle loom, am contemplating making a backstrap, and finally figured out knitting.



CWSG Program Schedule

September 17, 2022

Member Show and Tell

October 15, 2022

Dorset Buttons

Presented by Sarah Langston

November 19, 2022

Wee Weaving to Wear

Presented by Debbie Stringer

December 10, 2022

Christmas Party

January 21, 2023

Roc Day Recognition

Presented by Marcy Petrini

February 18, 2023

Demonstrating Demonstrations

Presented by Donna Peyton

April 1, 2023 (March Program)

Sheep to Shawl at the Ag Museum

April 15, 2023

Small Looms for Weaving

Presented by Nancy Hester and Janet Lee

May 20, 2023

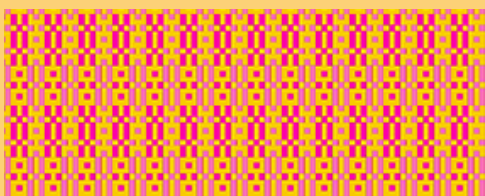
Weaving for Garments

Presented by Nancy Landrum

New Members Drive

Thanks to everyone for spreading the word about our guild. We have had great success this year recruiting new members!

Please continue to reach out to those interested in weaving and spinning and invite them to one of our meetings!



Upcoming Community Events

Mississippi Makers Fest at the Two Mississippi Museums

Saturday, May 13, 2023, from 10 a.m. to 6 p.m. For more information on this event, go to <https://msmakersfest.mdah.ms.gov/>

CHT 2023 Conference

Contemporary Handweavers of Texas will host their biennial conference, Nothing but Blue Skies from May 31-June 4. Some of our members are attending. For more information contact Nancy Hester or go to [CHT Conference 2023 – Contemporary Handweavers of Texas \(weavetexas.org\)](#)

Other art or craft interests/experiences/ambitions: If I'm not working with yarn, I also sew and embroider, bake, read, or paint.

Other hobbies/pastimes: When I'm not creating, I usually cuddle my two trouble-making cats, or spend time outside.

Presentation of Officer Nomination Slate

Submitted by Gio Chinchar and Jeanne Marie Peet

The Nominating Committee is pleased to present the following slate of candidates for your consideration in the CWSG 2023 election. Both ladies are long-standing members of CWSG and have served previously on the board. Voting will take place at the CWSG Annual Meeting on Saturday, April 15th. **Note: If you unable to attend the meeting, please send your vote (Yes or No) to our secretary Jeanne Marie: jmpeet@bellsouth.net** Nominations from the floor will be accepted at the Annual Meeting.

President – Alma Ellis

Vice-President – Donna Peyton

Alma Ellis:

Alma joined CWSG in September 2010. She served as secretary/newsletter editor from June 2011 to May 2014 and as Vice-President from June 2017 through May 2019. Additionally, Alma has served as chair of Sheep to Shawl and set up two educational workshops for the guild.

Alma began her career as a newspaper writer/photographer, moved on to 14 years of corporate communication/public relations, then went into state government as a writer— lots of reports, magazines, brochures, grants. In 2019, after 22 years as a special project director with the Institute of Disability Studies at the University of Southern Mississippi Alma retired.

The following is quoted from *Spotlight on Alma Ellis* CWSG Newsletter, 2022: "I tell people I'm a begin-again weaver. I started in the '80s, but I didn't get back to it until the 2000s. Like many, my interest in weaving began with garment sewing. My mom, who sewed beautifully, taught me to sew in grade school and helped me to progress to garments as a clothes-loving teen. I first became interested in weaving by watching demonstrations at Pleasant Hill, a restored Shaker village in Kentucky. My aunt worked there, and when we visited, I would always head to the fiber building. There was an aha moment—as a weaver, you can make your own fabric for your garments! I finally got around to taking a class from Marcy Petrini in the early '80s when she was teaching weaving as part of the Millsaps Community Enrichment Programs. But I was a full-time working wife and mom with a small child so I didn't get back to weaving until I bought my first loom when my son graduated from college."

Donna Peyton:

Donna served as Librarian/Historian from June 2010 to May 2013 and as President from June 2013 through May 2015. In addition to providing some CWSG programs over the years, Donna has been a very active participant in Roc Day, Sheep to Shawl and demonstrating in various locations around the community.

Donna is originally from Charleston, South Carolina. Having lived on the Mississippi Gulf Coast and Auburn, Alabama, Donna moved to the Metro Jackson area in 2001. She has been knitting since 1993 and spinning her own yarn since 2009. She has published patterns with Cooperative Press and on Ravelry. She has taught knitting and drop spindle classes in Mississippi and Texas. Donna teaches Latin and English at Ridgeland High School.

Sheep to Shawl is Always Fun!

Submitted by Alma Ellis

Last Saturday was like many Sheep to Shawl days. We were blessed with glorious sunshine, amazing spring temps, and a crowd of people eager to learn more about the sheep to shawl process—shearing, dyeing, carding, spinning, and weaving.



Guild members setting up under the pavilion

set up four sales tables of yarns, equipment and books.

People arrived steadily from 10 a.m. until take down at 3 p.m., asking lots of questions and trying out their fiber skills.

Interestingly, the first Chimneyville Weavers and Spinners Guild Sheep to Shawl was held 41 years ago on April 3 and 4, 1982.

This year, Sheep to Shawl returned to the Mississippi Agriculture and Forestry Museum on Lakeland Drive in Jackson. Guild members took their places under the pavilion near the Children's Barnyard where the sheep are located. In addition to tables for the sheep to shawl processes and two activity tables, the guild also



Knitting and pin loom weaving demos by Beverly Anglin

Sheep to Shawl Thank Yous!

Submitted by Marcy Petrini

It was a wonderful day “at the farm”. A big thank you to Sarah, Rachel, Amy and the rest of the Ag museum staff for all their support in making this a special sheep to shawl. Thank yous to Alma, Janet and Nancy for organizing the event. And a big thank you to those of you who replied to calls to volunteer in a timely manner so we could plan efficiently. We had a steady stream of visitors most of whom came to see us (according to the Ag Museum staff). Visitors and participants alike had a good time. The only unhappy creatures were the sheep – they didn’t like their haircuts!

HGA Textiles and Tea

Each Tuesday at 4 pm (EST), HGA hosts a conversation with some of the most respected fiber artists in the field today. They are broadcast via Zoom and free to view and open to all. Full schedule at weavespindye.org

April 4, 2023 | Peggy Hart

sponsored by Rebecca Hebert to acknowledge the Weavers Guild of Greater Baltimore

April 11, 2023 | Emily Dvorin

sponsored by Rebecca Hebert in honor of Sara Bixler, Tom Knisley & all instructors & volunteers at Red Stone Glen

April 18, 2023 | Brenda Osborn

sponsored by the Handweavers Guild of Connecticut

April 25, 2023 | Maria Sigma

sponsored by Jacksonville Weavers Guild, Inc. in memory of Barbara Wroten and Sandy Stranahan

Advertisement: Looms For Sale

Margaret Harris from the Mississippi Gulf Coast is paring down her weaving studio. Below are some items she has listed for sale (for pictures, please refer to last month's newsletter). All pricing is negotiable so if you see anything that interests you, please contact to discuss!

- Schact 8-shaft floor loom 28" w \$2400
- LeClerc 4-shaft floor loom 38" w \$2000
- AVL 8-shaft side tie-up floor loom 48" w \$3600
- 1960s 8-shaft side tie-up floor loom 36" w \$1800
- An eight-shaft table loom, possibly a Pioneer loom
- Two spinning wheels (one is painted silver)

Plus all the necessary equipment needed to furnish a full studio

Need more information? I'll try and provide it. You can text or call me at 228-326-0962.

Jean Sparkes

This event was held at the log cabin on the Natchez Trace in Ridgeland, which was then headquarters for the Craftsmen's Guild of Mississippi. Four years later, in June 1986, the second Sheep to Shawl was held at the Ag Museum. The third Sheep to Shawl was also held at the Ag Museum in May 1989.

CWSG member Sarah Pair, who is Director of Collections at the museum, said 131 people were admitted last Saturday, with most saying they were attending particularly for Sheep to Shawl.



Pictures from top-down: (1) weaving demonstration by Debbie Stringer (2) sheep shearing by Ag staff member Mason Kymes and Rachel Bone, and ag volunteers Tommy and Nancy Strickland (3) wash and dyeing demo by Marcy Petrini and carding demo by Aleatha Shannon and (4) spinning demo by Donna Peyton

Free (and without ads!)

Drawdown Software for Windows

Submitted by Marcy Petrini

Early in March while I was teaching in San Diego, one of the workshop attendees, Liz Jones, showed me the drawdown software that her engineer husband, Scott Jones, wrote for her. We can all use it because it is available free for downloading from Scott's website:

<https://www.quickdrawweaving.com/>

So far it is available for Windows platforms with more to come, he says.

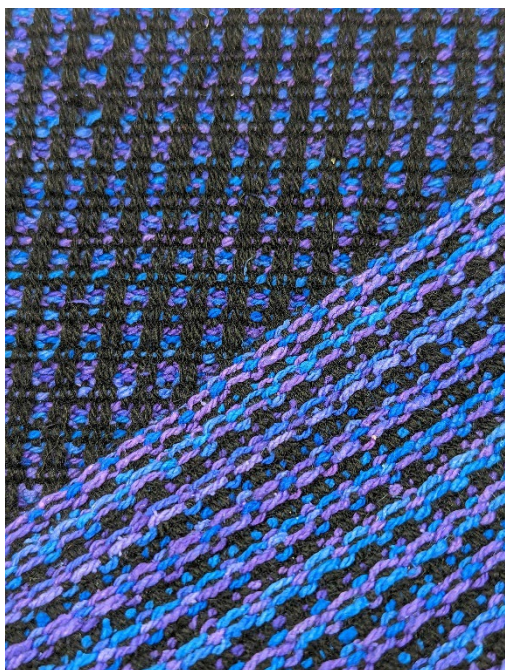
The software is really intuitive to use, but if you are new to drawdown software, there is a YouTube Channel that provides a tutorial. The videos are also accessible from the website above.

When you download the file to your computer, you may get questions about whether it is safe to do so. That's a pretty common question asked by a computer system when downloading what we call "executable files" – files that do functional operation. It is perfectly safe to download Scott's software, I have done it. Many of you know how ticky I am about clicking on links, etc. for fear of being hacked. Scott's software is safe, he is one of the good guys.

Member Show and Tell

Submitted by Various Members

1. Guild member Aleatha Shannon was recently featured in an article of *Bayou Life Magazine*. It is a great write-up explaining the story behind Aleatha's fiber craft journey and her business Willow Oak Fiber and Farm. Read the article here: <https://bayoulifemag.com/bayou-artist-aleatha-shannon/>



An example of Greek huck, discussed on Marcy's blog this month.

2. Marcy Petrini: This month's blog is on Greek huck, a little known structure:

<https://www.marcypetrini.com/marcy-s-blogs/355-blog-111-greek-huck>

About Chimneyville

Weavers & Spinners Guild

CWSG brings together people who enjoy and want to learn more about weaving and spinning. Our guild is based in the Jackson, Mississippi, area.

Officers

Each officer serves a two-year term on the CWSG board.

President: Nancy Hester

Vice President: Debra Sue Pate

Secretary: Jeanne Marie Peet

Treasurer: Heather Mitchell

Librarian/Historian: Janet Lee

Past President: Beth Palmer

Membership

Membership is open to anyone with like interests. The annual membership fee is \$25. A membership form is available at <http://cvillewsg.com/> and click on "membership." CWSG members may also join the CWSG Co-op, which is a member of the Craftsmen's Guild of Mississippi and provides opportunities to sell original handwoven and handspun work through CGM's shows and gallery.

Meetings/Events

CWSG normally meets on the third Saturday of the month, September through May. Meetings include a business session, program, and show-and-tell. We begin at 10 a.m. at the Madison City Library in Madison, Miss., unless otherwise noted. We also conduct public outreach activities such as weaving and spinning demonstrations at the Chimneyville Arts Festival and a springtime demonstration day known as Sheep to Shawl.

Newsletter

Please email newsletter content submissions to newsletter editor Janet Lee (jlemasters100@yahoo.com) by the first day of the month of publication. If you are sending a photo, please include caption information.